



CASE STUDY

NON PROFIT SOLAR FOR LOCAL 172 AT FOLSOM, NJ

Commissioned in July 2015, this 243 kWp DC solar system was delivered turnkey by Suntuity. The solar system consists of three separate system types co-located on a common site. These consist of a roof mounted ballasted system, a roof mounted S-5 clamp system and a ground mounted ballasted system.

The net-metered solar system is owned and operated by the S.E.T Heavy and General Laborers Local 172 Union and offsets almost 90% of their electricity needs on the site.

CHALLENGES

- Due to the existing utility infrastructure limitations, upgrades were required to accommodate any back feed from the system to the local grid.
- Furthermore, three separate systems had to be engineered to work in unison with existing site infrastructure.

ENVIRONMENTAL BENEFITS

- 254 megawatt hours of electricity is enough to power 25 average U.S. homes for a year
- This much electricity produces with solar, rather than fossil fuels, prevents 175 metric tons of carbon emissions, the equivalent of removing the annual emissions from 37 cars or the amount of carbon sequestered by 144 acres of U.S. forest each year

ABOUT LOCAL 172

- Construction & General Laborers' Local 172 represents APPROXIMATELY 20,000 heavy and highway laborers and plant and manufacturing employees in Southern and parts of Central New Jersey.

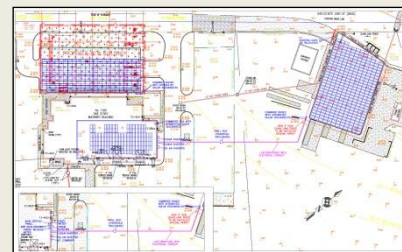
Contact
 Suntuity Community Relations Manager
 (866) 786-8848
 media@suntuity.com

© 2008-2016 Suntuity. All Rights Reserved. Suntuity is a registered trademark of Natural Power Sources LLC dba Suntuity in the US and other countries as well. All other trademarks are properties of their respective owners

PROJECT FACTS

Location:	Folsom, NJ
Project Size:	243 kW DC
Project Type:	Roof and Gnd. Mount Fix Tilt
Est. 1 st Yr. Production:	254 MWh
Construction Start:	January 2015
Commercial Operation:	July 2015
System Owner:	S.E.T Local 172
Site Owner:	S.E.T Local 172
Power Purchaser:	Net Metered
Square Footage:	Approx. 20,000
Number of Modules:	810
PV Technology:	Lightway Polycrystalline
Inverters:	Solectria Centrals
Racking:	Genmounts and S-5
Project Development:	Suntuity

PROJECT LAYOUT



PROJECT LOCATION

